

CHEUNG KEE CANVAS LTD
G/F,352,RECLAMATION STREET,KOWLOON,HONG KONG

Sample Description : PVC TARPAULIN
Item No. : CK 2003

As above test item and its relevant information regarding to the submission are provided and confirmed by the applicant. SGS is not liable to either the test item or its relevant information, in terms of the accuracy, suitability, reliability or/and integrity accordingly.

SGS Ref No. : SDFS2301000345FF
Sample Receiving Date : Jan 13, 2023
Test Performing Date : Jan 13, 2023 to Jan 18, 2023
Test Performed : Selected test(s) as requested by applicant

Test Result Summary

No.	Test(s) Requested	Result(s)	Comments
1	European standard BS EN 71-2: 2020 Safety of toys - Part 2: Flammability Clause 4.1	PASS	/
For further details, please refer to the following page(s)			

Signed for and on behalf of
SGS-CSTC Standards Technical Services Co., Ltd. Shunde Branch



Peter Zhao
Authorized Signatory

scan to see the report



SDHL2301000816HI



Unless otherwise agreed in writing, this document is issued by the Company subject to its General Conditions of Service printed overleaf, available on request or accessible at <http://www.sgs.com/en/Terms-and-Conditions.aspx> and, for electronic format documents, subject to Terms and Conditions for Electronic Documents at <http://www.sgs.com/en/Terms-and-Conditions/Terms-e-Document.aspx>. Attention is drawn to the limitation of liability, indemnification and jurisdiction issues defined therein. Any holder of this document is advised that information contained hereon reflects the Company's findings at the time of its intervention only and within the limits of Client's instructions, if any. The Company's sole responsibility is to its Client and this document does not exonerate parties to a transaction from exercising all their rights and obligations under the transaction documents. This document cannot be reproduced except in full, without prior written approval of the Company. Any unauthorized alteration, forgery or falsification of the content or appearance of this document is unlawful and offenders may be prosecuted to the fullest extent of the law. Unless otherwise stated the results shown in this test report refer only to the sample(s) tested and such sample(s) are retained for 30 days only.
Attention: To check the authenticity of testing / inspection report & certificate, please contact us at telephone: (86-755) 8307 1443, or email: CN.Doccheck@sgs.com
1/F, 1# Building European Industrial Park, No.1 Shunde South Road, Wusha Section, Daliang Town, Shunde, Foshan, Guangdong, China 528333 t (86-757)22805888 f (86-757)22805858 www.sgs.com.cn
中国·广东·佛山市顺德区大良街道办事处五沙顺和南路1号欧洲工业园一号楼首层 邮编: 528333 t (86-757)22805888 f (86-757)22805858 e sgs.china@sgs.com

Test Conducted:

European standard BS EN 71-2: 2020 Safety of Toys - Part 2: Flammability Clause 4.1

I. Sample Details

Materials:	Plastic sheet
Weight:	297 g/m ²

II. Precondition and Test Condition

---	Temperature	Relative humidity	Duration
Precondition	(20±5)°C	(65±5)%	24h
Test Condition	18.8°C	48%	-----

III. Test Results

<u>Clause</u>	<u>Description</u>	<u>Result</u>
4.1	<p>General requirements</p> <p>The following materials shall not be present in toys:</p> <ul style="list-style-type: none"> — celluloid (cellulose nitrate), except when used in varnish, paint or glue, or in balls of the type used for table tennis or similar games; — highly flammable solids; — materials with a piled surface which produce surface flash when a flame is applied to the tested material under the conditions described in 5.5. Piled surfaces showing no momentary area of flame over the area of the piled surface remote from the test flame are considered to meet this requirement. <p>Specific materials to which the test flame is applied in order to check compliance of the toy with requirements in 4.2 to 4.5 are considered to comply with the above requirements if the toy meets its appropriate requirements in 4.2 to 4.5.</p> <p>In addition, toys shall not contain flammable gases, extremely flammable liquids, highly flammable liquids, flammable liquids and flammable gels except as provided for below:</p> <ul style="list-style-type: none"> — flammable liquids and flammable gels supplied in sealed containers having a maximum volume of 15 ml per container; — highly flammable liquids and flammable liquids being entirely retained within a porous material in capillary channels of writing instruments; — flammable liquids with a viscosity greater than 260 × 10⁻⁶ m²/s corresponding to a flow time of more than 38 s when determined in accordance with EN ISO 2431:2019 using cup No. 6; — highly flammable liquids contained in chemical toys, and in olfactory board games, cosmetic kits and gustative games, as defined in 2009/48/EC. 	<u>Pass</u>

Note: This document cannot be reproduced except full, without prior written approval of the Company.

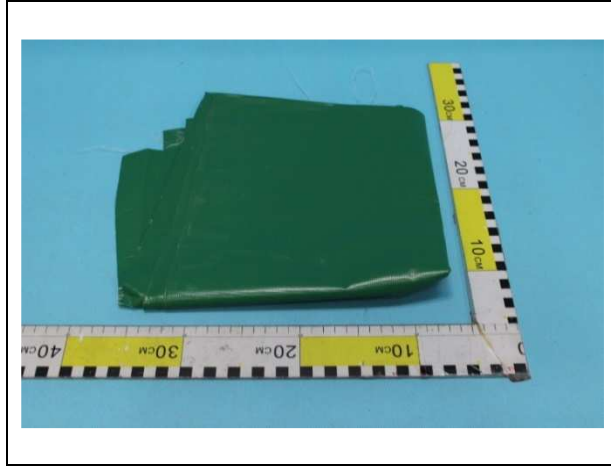


Unless otherwise agreed in writing, this document is issued by the Company subject to its General Conditions of Service printed overleaf, available on request or accessible at <http://www.sgs.com/en/Terms-and-Conditions.aspx> and, for electronic format documents, subject to Terms and Conditions for Electronic Documents at <http://www.sgs.com/en/Terms-and-Conditions/Terms-e-Document.aspx>. Attention is drawn to the limitation of liability, indemnification and jurisdiction issues defined therein. Any holder of this document is advised that information contained hereon reflects the Company's findings at the time of its intervention only and within the limits of Client's instructions, if any. The Company's sole responsibility is to its Client and this document does not exonerate parties to a transaction from exercising all their rights and obligations under the transaction documents. This document cannot be reproduced except in full, without prior written approval of the Company. Any unauthorized alteration, forgery or falsification of the content or appearance of this document is unlawful and offenders may be prosecuted to the fullest extent of the law. Unless otherwise stated the results shown in this test report refer only to the sample(s) tested and such sample(s) are retained for 30 days only.

Attention: To check the authenticity of testing / inspection report & certificate, please contact us at telephone: (86-755) 8307 1443, or email: CN.Doccheck@sgs.com

1F, 1st Building European Industrial Park, No.1 Shunde South Road, Wusha Section, Daliang Town, Shunde, Foshan, Guangdong, China 528333 t (86-757)22805888 f (86-757)22805858 www.sgs.com.cn
 中国·广东·佛山市顺德区大良街道办事处五沙顺和南路1号欧洲工业园一号楼首层 邮编: 528333 t (86-757)22805888 f (86-757)22805858 e sgs.china@sgs.com

Photo Appendix:



End of Report



Unless otherwise agreed in writing, this document is issued by the Company subject to its General Conditions of Service printed overleaf, available on request or accessible at <http://www.sgs.com/en/Terms-and-Conditions.aspx> and, for electronic format documents, subject to Terms and Conditions for Electronic Documents at <http://www.sgs.com/en/Terms-and-Conditions/Terms-e-Document.aspx>. Attention is drawn to the limitation of liability, indemnification and jurisdiction issues defined therein. Any holder of this document is advised that information contained hereon reflects the Company's findings at the time of its intervention only and within the limits of Client's instructions, if any. The Company's sole responsibility is to its Client and this document does not exonerate parties to a transaction from exercising all their rights and obligations under the transaction documents. This document cannot be reproduced except in full, without prior written approval of the Company. Any unauthorized alteration, forgery or falsification of the content or appearance of this document is unlawful and offenders may be prosecuted to the fullest extent of the law. Unless otherwise stated the results shown in this test report refer only to the sample(s) tested and such sample(s) are retained for 30 days only.
Attention: To check the authenticity of testing / inspection report & certificate, please contact us at telephone: (86-755) 8307 1443, or email: CN.Doccheck@sgs.com

1F, 1st Building European Industrial Park, No.1 Shunde South Road, Wusha Section, Daliang Town, Shunde, Foshan, Guangdong, China 528333 t (86-757)22805888 f (86-757)22805858 www.sgs.com.cn
中国·广东·佛山市顺德区大良街道办事处五沙顺和南路1号欧洲工业园一号楼首层 邮编: 528333 t (86-757)22805888 f (86-757)22805858 e sgs.china@sgs.com